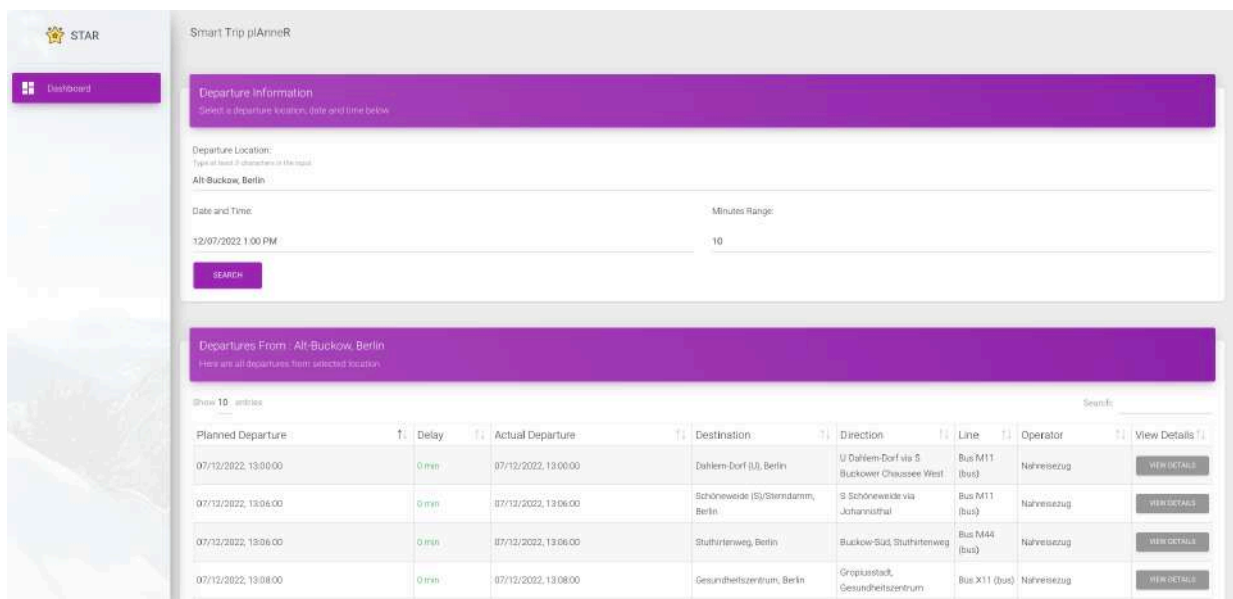


Smart Trip plAnneR

1. Description

Smart Trip Planner is a standalone web application with a key role to present to the user all journey's details which start from a given departure location (city or station name), date and time and a specific minutes range.



The main screen contains three inputs where user can fill the basic parameters to search. In the first input user must type at least 3 characters and the system dynamically generates a dropdown list (querying the given api) with all possible locations that should match to the given input to select from. The second input provides a datetime picker with a familiar calendar in which the user can pick a desired date and time. The third input accepts only digits which are the minutes range for the departure.

Departure Information
Select a departure location, date and time below

Departure Location:
Type at least 3 characters in the input:
Alt-Buckow, Berlin

- Alt-Buckow, Berlin
- Alt-Buckow/Dorfteich, Berlin
- Berlin, Ev. Dorfkirchhof Alt-Buckow (Öffentliche E
- Berlin, Ld. Friedhof Alt-Buckow (Öffentliche Einri
- Berlin, Lindengarten (Alt-Buckow 15) (Gastronomie)
- Berlin Buckower Chaussee
- Alt-Buch/Willbergstr., Berlin
- Alt-Buch, Berlin
- Berlin, Buckower Tönnchen (Kultur und Unterhaltung
- Buckower Chaussee (S), Berlin
- Buckower Chaussee Ost (S), Berlin
- Mariendorfer Damm/Buckower Chaussee, Berlin
- Buckower Chaussee West (S), Berlin
- Buckower Damm/Gutschmidtstr., Berlin

December 2022

SU	MO	TU	WE	TH	FR	SA
27	28	29	30	1	2	3
4	5	6	7	8	9	10
11	12	13	14	15	16	17
18	19	20	21	22	23	24
25	26	27	28	29	30	31
1	2	3	4	5	6	7

12/07/2022 1:00 PM

Minutes Range: 10

SEARCH

When all necessary information is filled and user hits the search button, application generates dynamically a table with all departures from the given location and starting from the given date/time and range.

Departures From: Alt-Buckow, Berlin
Here are all departures from selected location

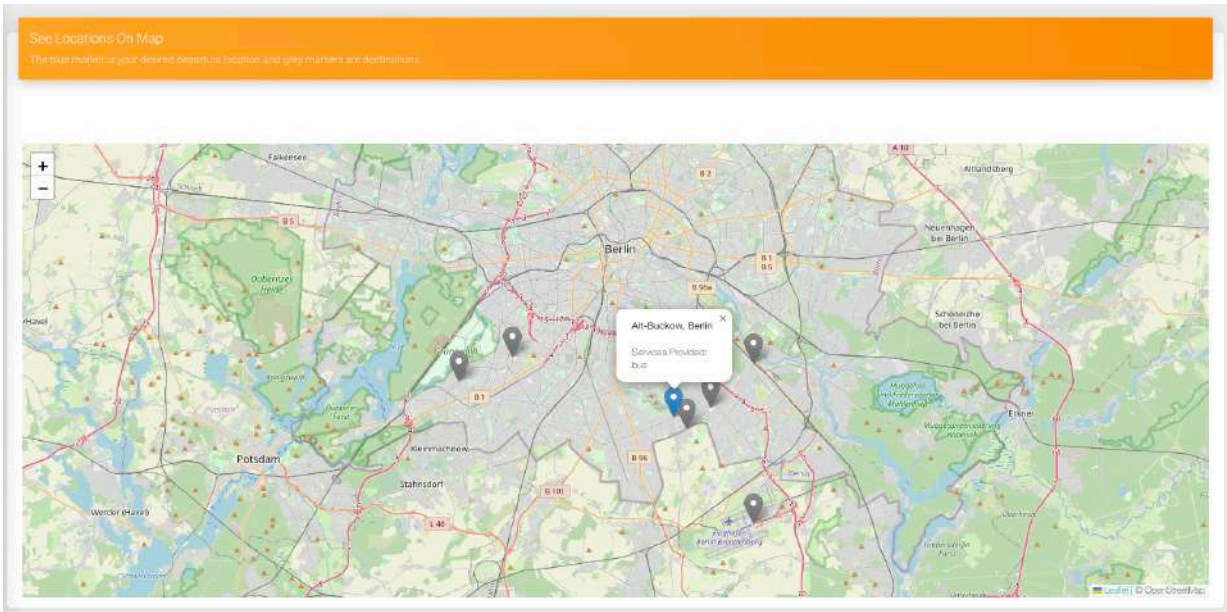
Show 10 entries

Planned Departure	Delay	Actual Departure	Destination	Direction	Line	Operator	View Details
07/12/2022, 12:06:00	0 min	07/12/2022, 12:06:00	Schöneweide (S)/Stendamm, Berlin	S Schöneweide via Johannisthal	Bus M11 (bus)	Nahreisezug	VIEW DETAILS
07/12/2022, 12:06:00	0 min	07/12/2022, 12:06:00	Stuhrlinweg, Berlin	Buckow Süd, Stuhrlinweg	Bus M44 (bus)	Nahreisezug	VIEW DETAILS
07/12/2022, 12:08:00	0 min	07/12/2022, 12:08:00	Gesundheitszentrum, Berlin	Gropiusstadt, Gesundheitszentrum	Bus X11 (bus)	Nahreisezug	VIEW DETAILS
07/12/2022, 12:09:00	0 min	07/12/2022, 12:09:00	Hermannstr. (S+U), Berlin	S+U Hermannstr.	Bus M44 (bus)	Nahreisezug	VIEW DETAILS
07/12/2022, 12:09:00	0 min	07/12/2022, 12:09:00	Flughafen BER - Terminal 1-2, Schönefeld	Flughafen BER Terminal 1-2 via T5	Bus X71 (bus)	Nahreisezug	VIEW DETAILS
07/12/2022, 12:09:00	3 min	07/12/2022, 12:11:00	Krumme Lanke (U), Berlin	U Krumme Lanke via S Marienfelde	Bus X11 (bus)	Nahreisezug	VIEW DETAILS
07/12/2022, 12:10:00	0 min	07/12/2022, 12:10:00	Dahlemer Dorf (U), Berlin	U Dahlemer Dorf via S Buckower Chaussee West	Bus M11 (bus)	Nahreisezug	VIEW DETAILS

Showing 1 to 7 of 7 entries

PREV 1 NEXT

A map is also being generated showing the departure location (blue marker) and all the possible destinations (grey markers). Clicking on each marker user can access the services provided in every station.



On the departures table there is a button (view details) which generates a modal showing all the available information about the departure, arrival and remarks information. It also provides all the stopovers (all the passed stops are checked) giving the user the ability to manage the stops through the UI.

From: Dahlem-Dorf (U), Berlin to: Schöneweide (S)/Sterndamm, Berlin

Departure Information

CLICK TO EXPAND/COLLAPSE

Departure : 07/12/2022, 11:18:00

Departure Delay: 0 min

Departure Direction : S Schöneweide

Line Info : Bus M11 (bus)

Arrival Information

CLICK TO EXPAND/COLLAPSE

Arrival : 07/12/2022, 12:32:00

Arrival Delay: 0 min

↑↓ Delay

0 min

0 min

0 min

0 min

0 min

2 min

0 min

↑↓

Sterndamm,

, Berlin

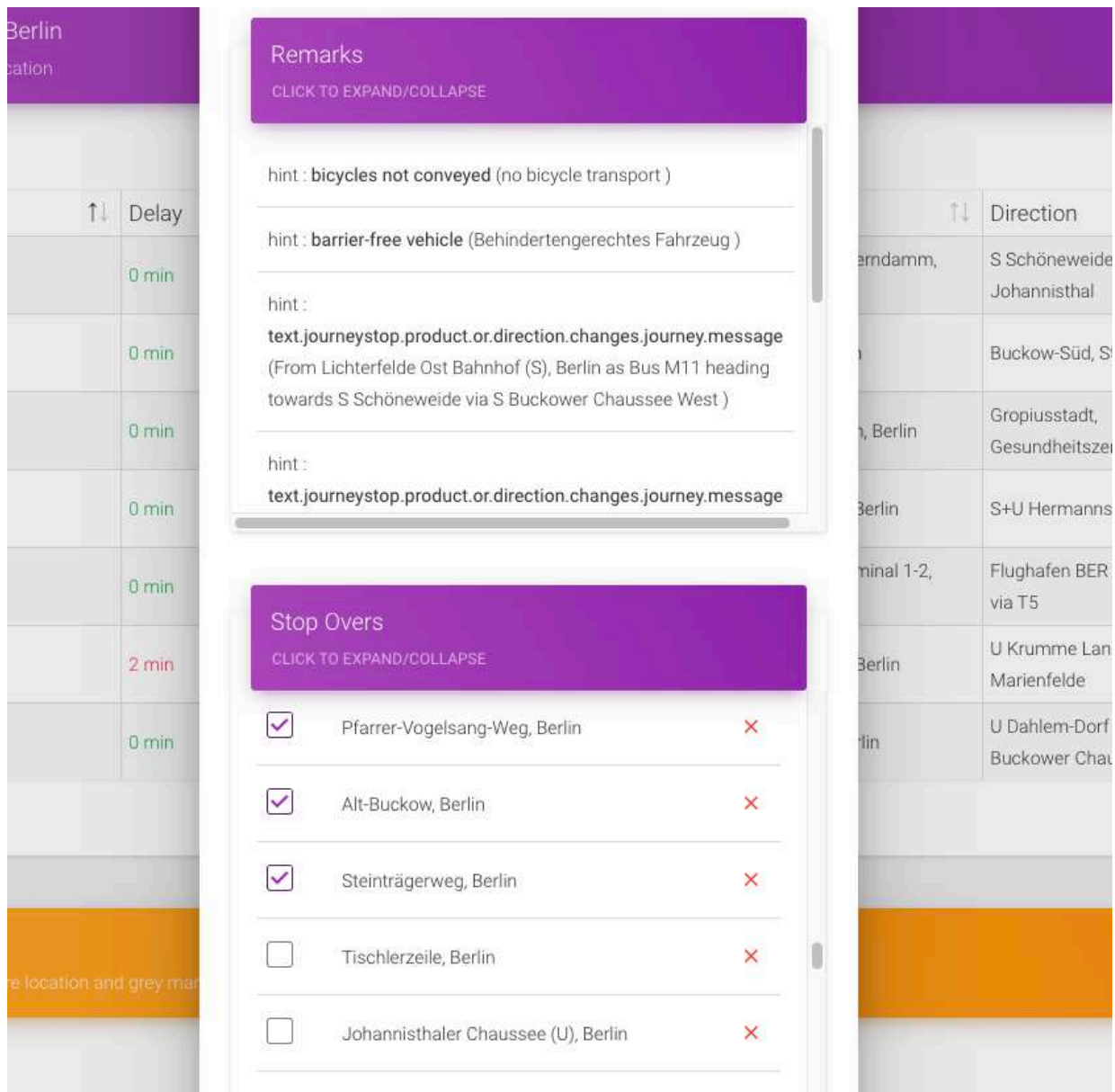
Berlin

terminal 1-2,

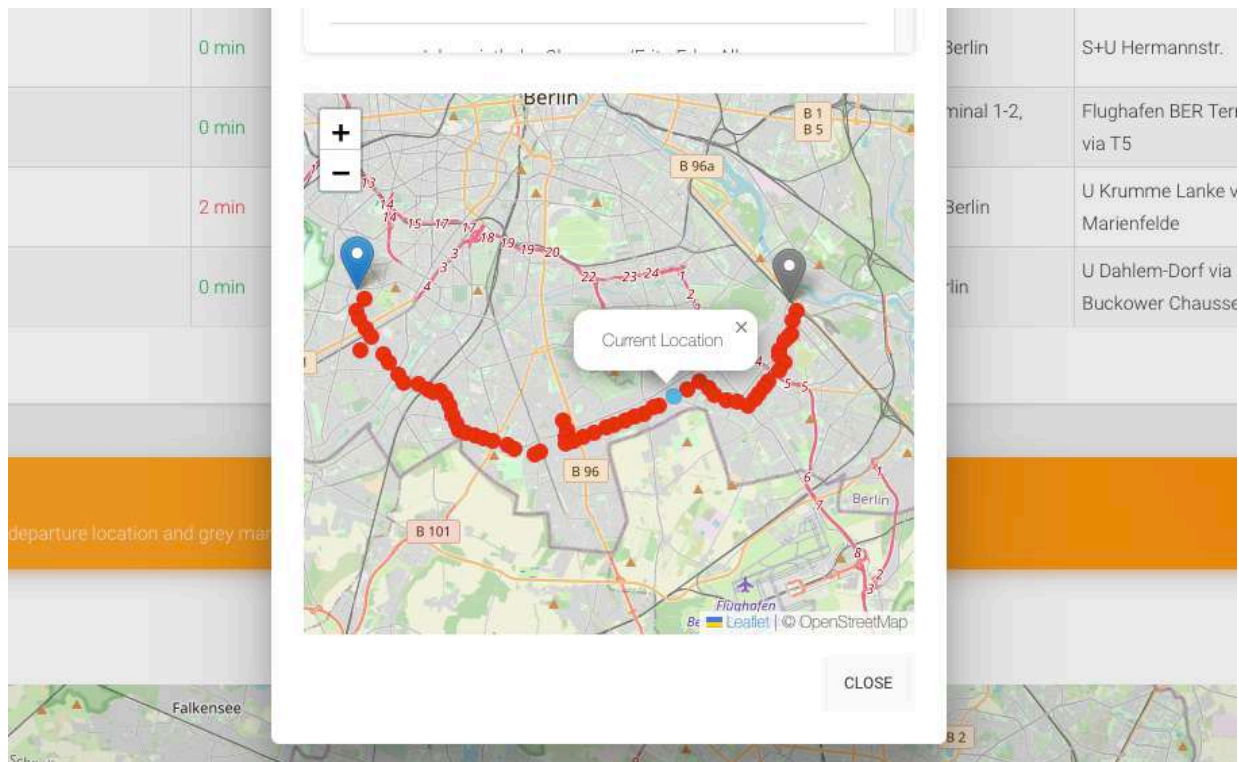
Berlin

lin

ation and grey mat



Last but not least the application also provides a map which information about the route of the journey. (blue marker = Origin location, grey marker= destination location, red dot = stopovers, blue dot = current location).



Finally, the tool is implemented in such a way that it is easily scalable.

Live Demo [here](#).

Built With

- [jQuery](#)
- [Bootstrap](#)
- [Material Dashboard](#)
- [Leaflet](#)

Prerequisites

- Java
- Apache Tomcat or any other webapplication server (Jetty, Glassfish etc.)

2. Installation and deployment

Three simple steps: Clone - Deploy - Run.

1. Copy the project folder into the desired location.
2. Deploy (drop the folder into your desired web application server (eg webapps for Apache Tomcat)).
3. Run

This project is written mainly in JavaScript so it can be deployed directly on a web server (eg. Tomcat v7 or greater). After deployment you will be able to access the application in address: [URL]:[PORT]/Star

3. Contact ###

Kostas Petrakis <petrakis1@gmail.com >